

Definitions and Terminology in RPD

ขอขอบคุณ

Lecture by

Atthasit Boonbanyen

DDS, MSc (Prosthodontics)

และ อ.ทพ.ไชยวุฒิ พฤกษ์งามพันธ์
สำหรับสื่อประกอบการสอน

**Why we should know
the definitions and terminology?**

Why we should know the definitions and terminology?

Standard nomenclatures

“Uniform terminology”



JPD

THE JOURNAL
OF PROSTHETIC
DENTISTRY

**THE GLOSSARY OF
PROSTHODONTIC
TERMS**

Ninth Edition
GPT-9

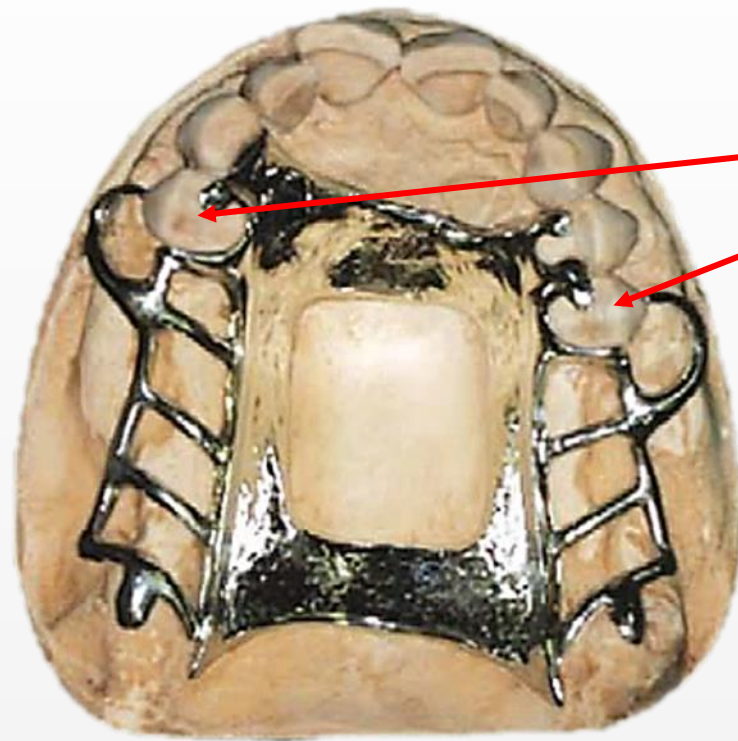


The Glossary of Prosthodontic Terms 9th Edition



Intraoral Structure Terminology

Intraoral Structure Terminology



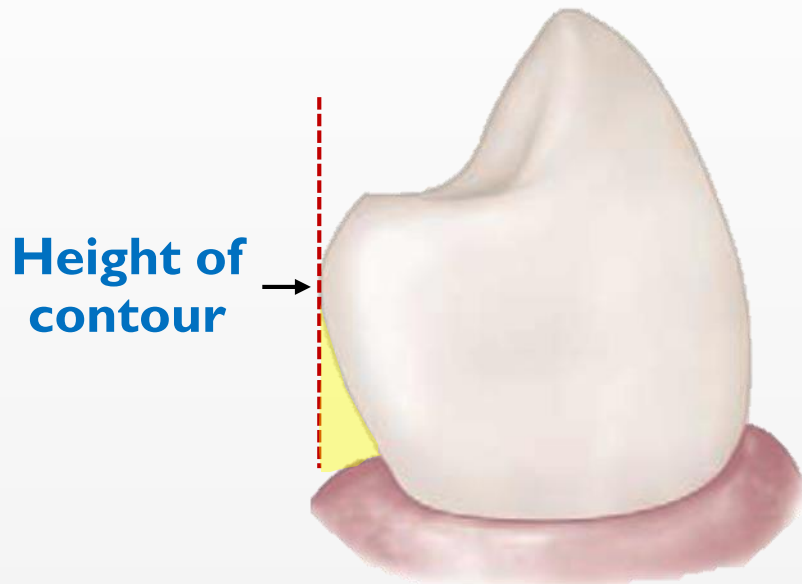
Abutment

1. That part of a structure that directly **receives thrust or pressure**; an anchorage.
2. A tooth, a portion of a tooth, or that portion of a dental implant that **serves to support and/or retain a prosthesis**.

- **Abutment ฟันหลัก** คือ ฟันที่ใช้ในการรองรับแรงหรือยึดเกาะฟันปลอม
 - **Primary Abutment** คือ ฟันหลักที่ใช้ทั้งในการรองรับแรงและยึดเกาะฟันปลอม
 - **Secondary Abutment** คือ ฟันหลัก ฟันที่ใช้ในการรองรับแรงหรือยึดเกาะฟันปลอมเพียงอย่างเดียว

Intraoral Structure Terminology

Undercut



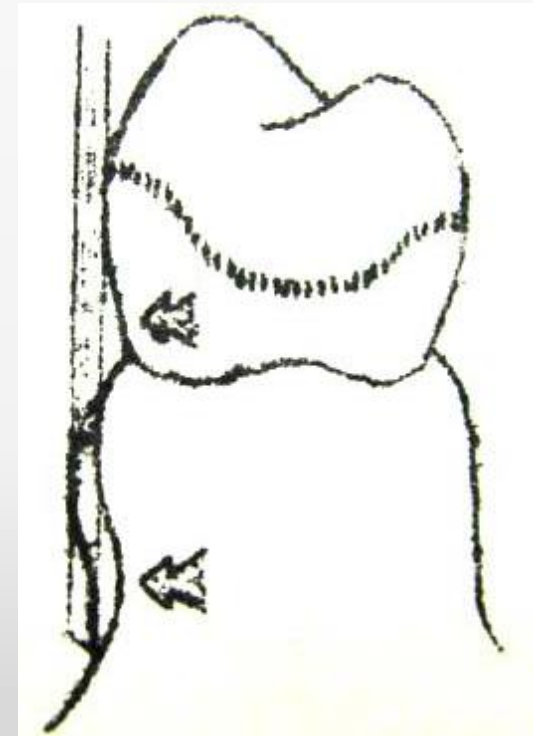
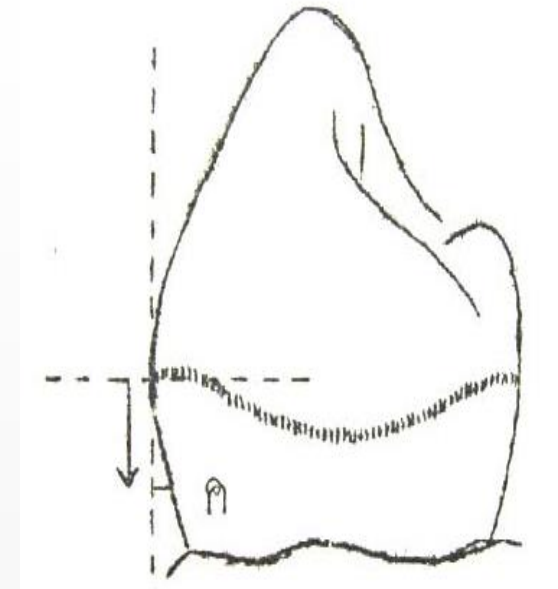
1. The portion of the surface of an object that is **below the height of contour** in relationship to the path of placement.



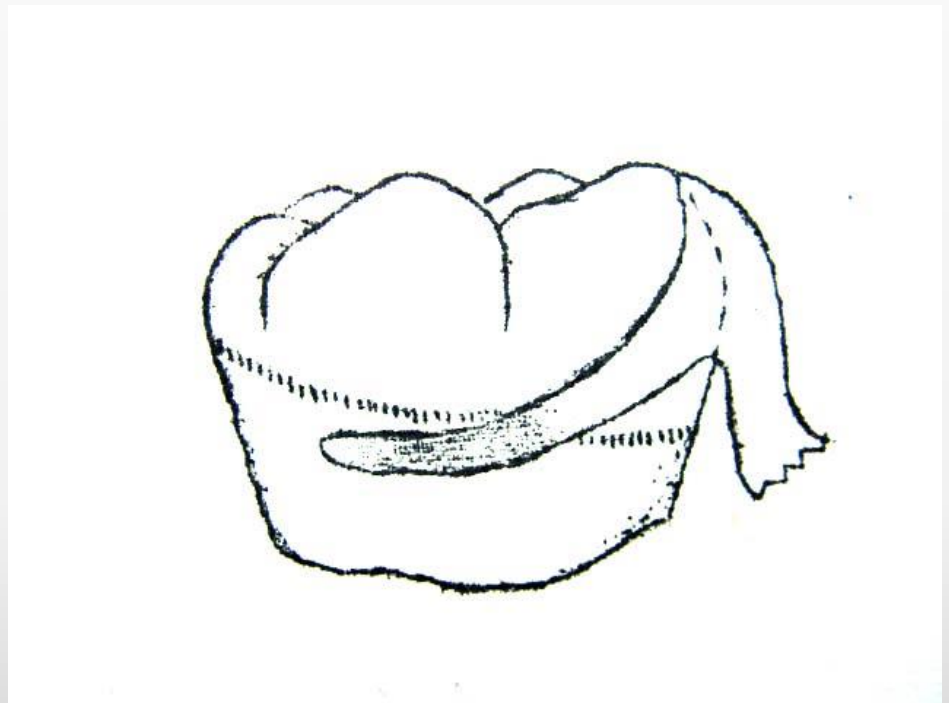
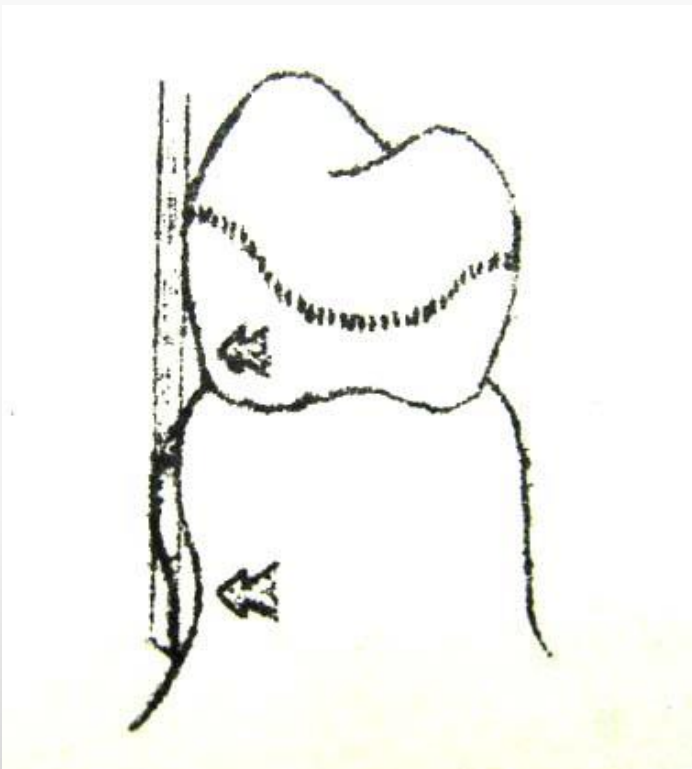
2. The **contour of a cross-sectional portion of a residual ridge** or dental arch that prevents the insertion of a dental prosthesis.

Terminology

- Undercut area บริเวณความคอด
 - Desirable undercut area บริเวณคอดที่มีประโยชน์ ใช้ในการยึดเกาะฟันปลอม
 - Undesirable undercut area บริเวณคอดที่ไม่มีประโยชน์ กีดขวางการใส่ฟันปลอม

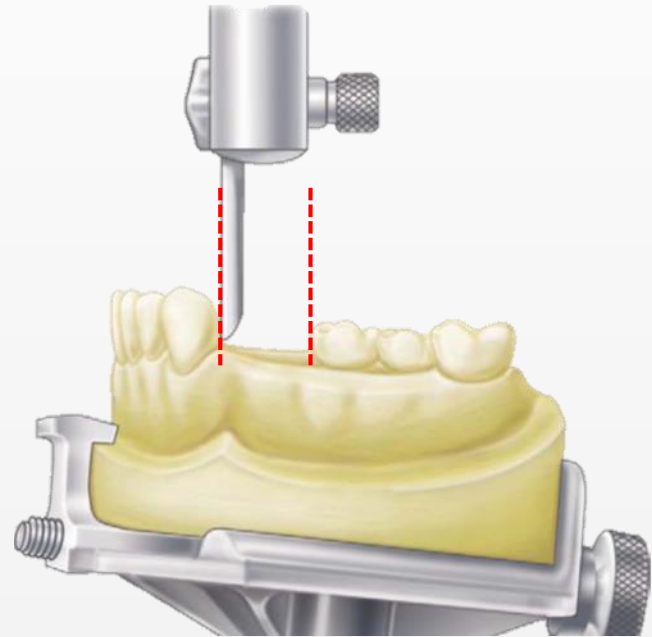


- Non-undercut area บริเวณที่ไม่มีความคอด



Intraoral Structure Terminology

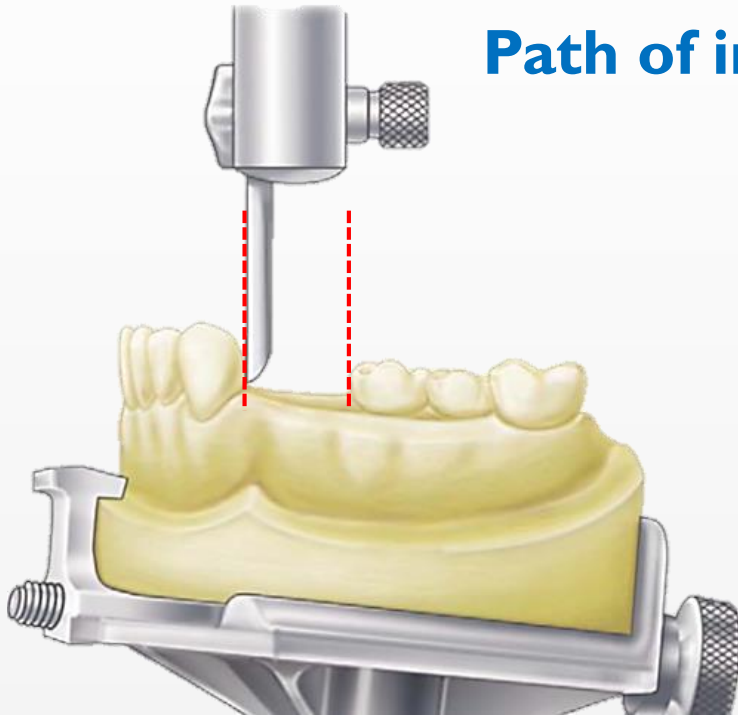
Guiding plane



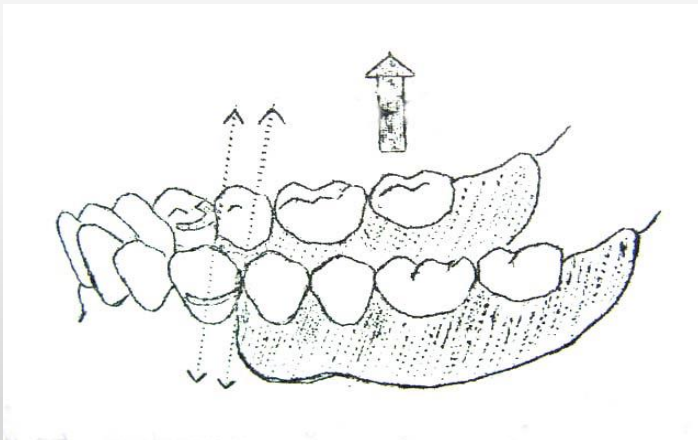
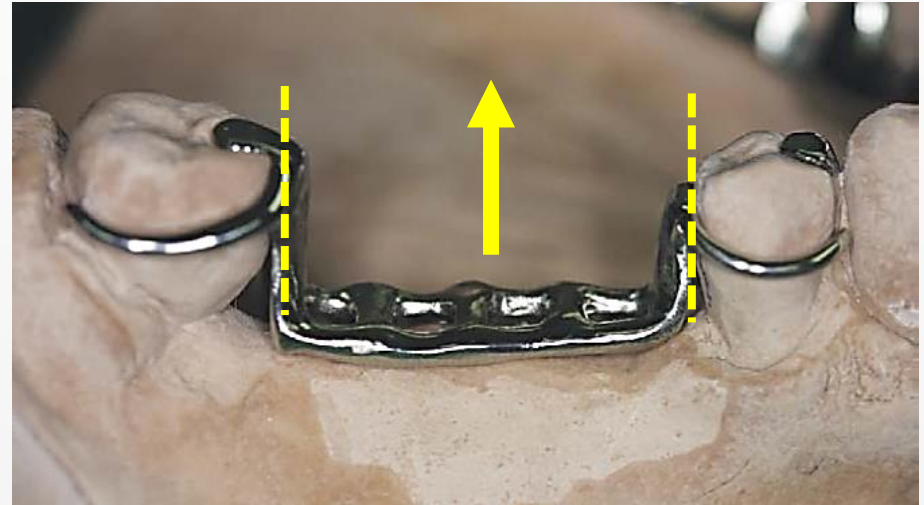
Two or more **vertically parallel surfaces** on **abutment teeth** and/or fixed dental prostheses oriented so as to **contribute to the direction of the path of placement and removal** of a removable partial denture, maxillofacial prosthesis, and overdenture.

Intraoral Structure Terminology

Path of insertion/placement



Part of insertion and removal



The **specific direction** in which a prosthesis is placed on the residual alveolar ridge, abutment teeth, dental implant abutment(s), or attachments.

Intraoral Structure Terminology

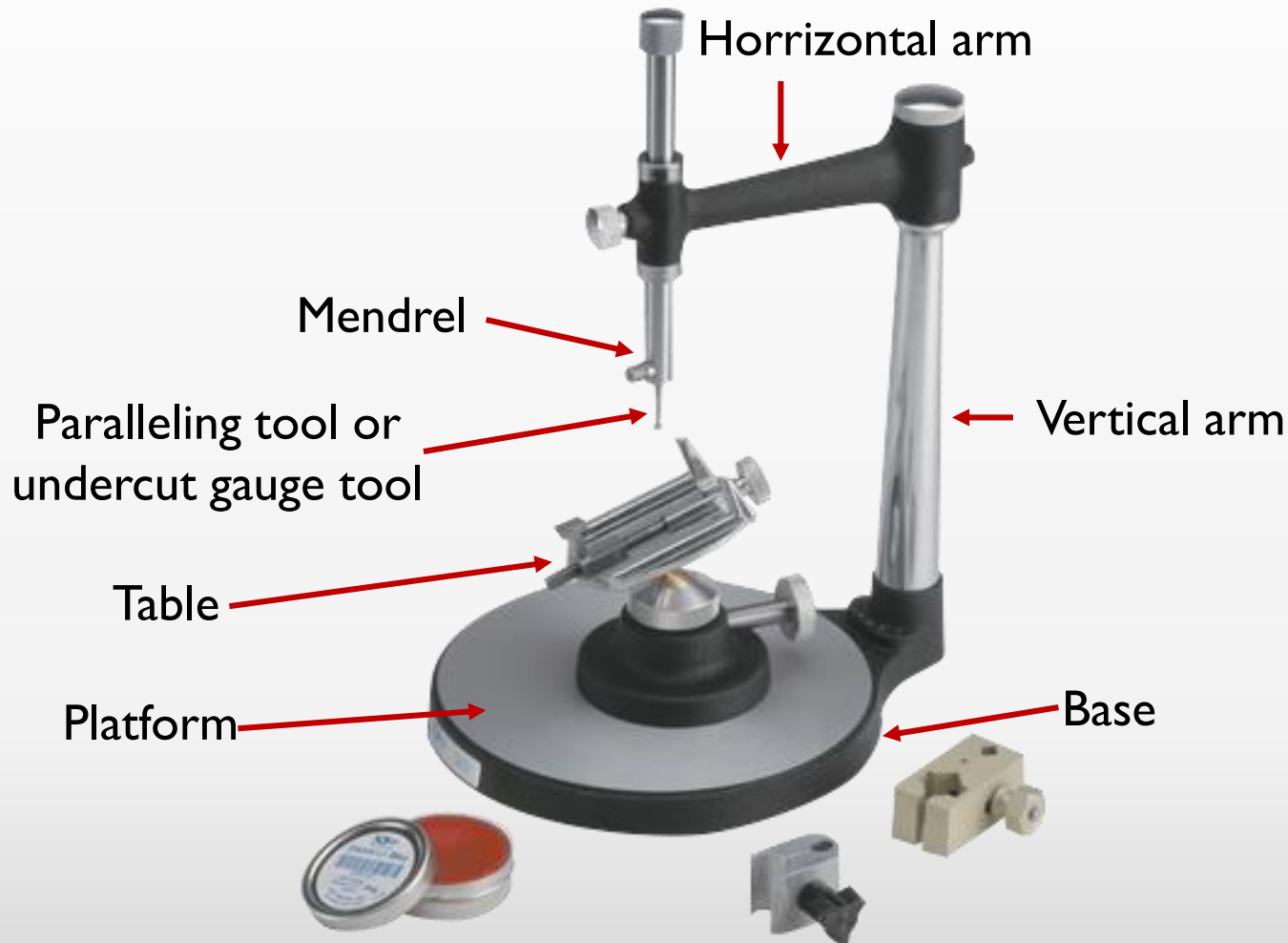
Surveyor



a paralleling instrument used in making a dental prosthesis to locate and delineate the contours and relative positions of abutment teeth and associated structures

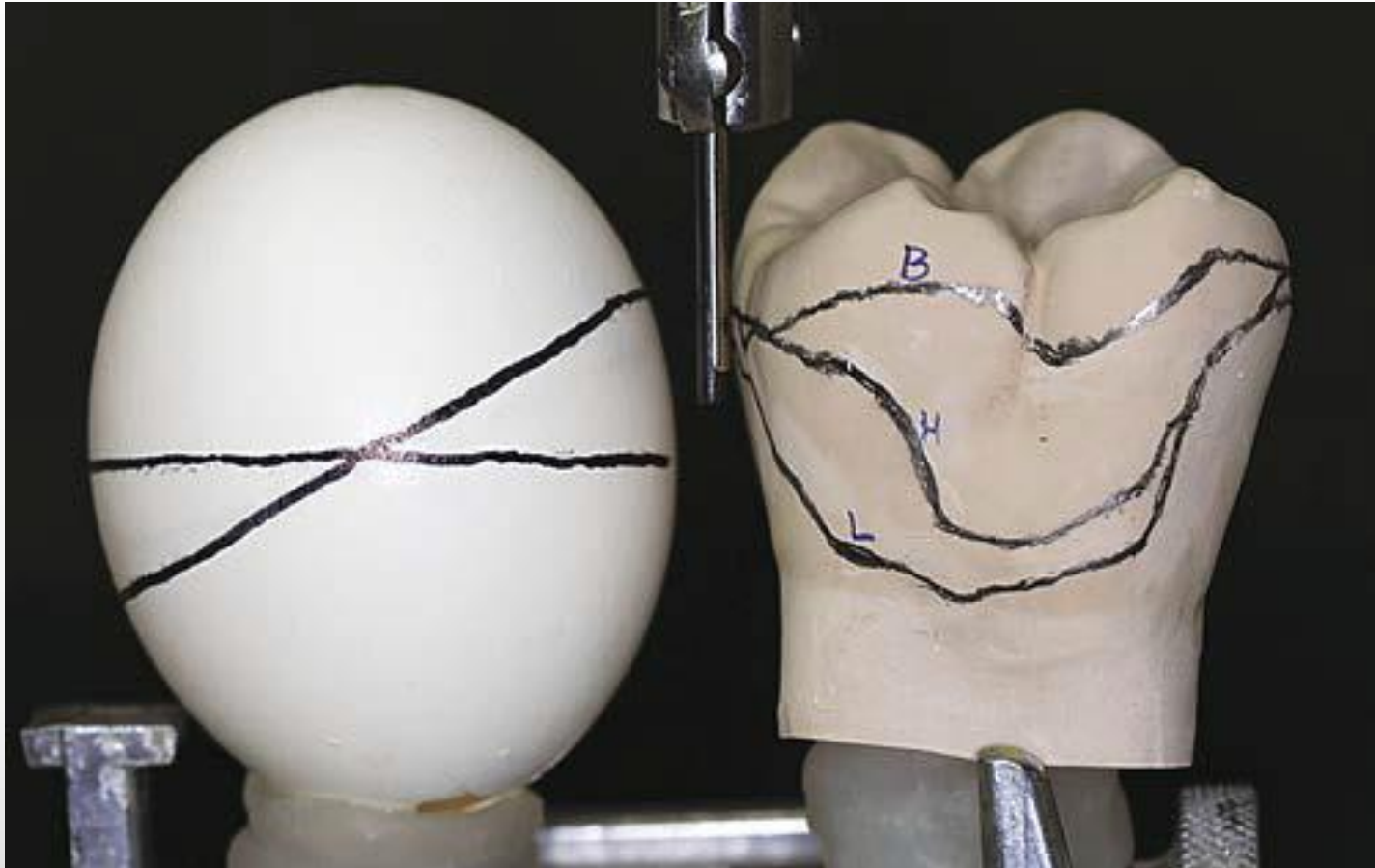
Intraoral Structure Terminology

Surveyor



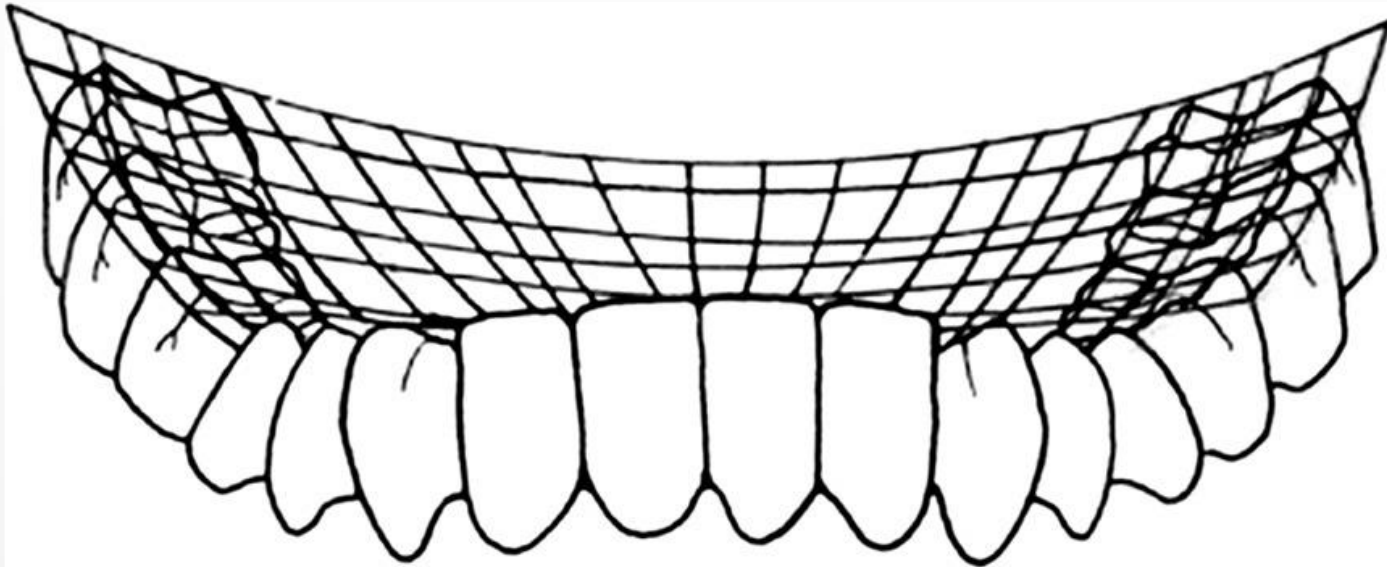
Intraoral Structure Terminology

Survey line



Intraoral Structure Terminology

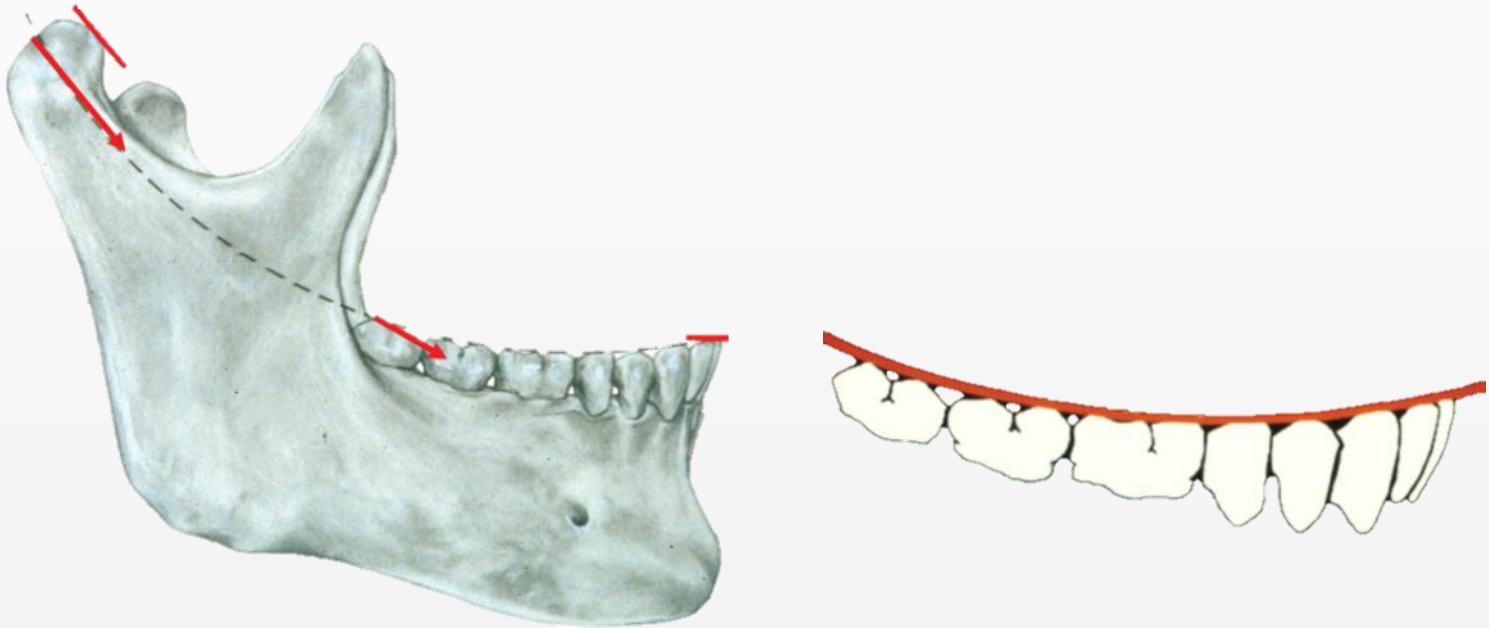
Occlusal Plane



1. The **average plane established by the incisal and occlusal surfaces of the teeth**; generally, it is not a plane but represents the planar mean of the curvature of these surfaces.
2. The **surface of wax occlusion rims** contoured to guide in the arrangement of denture teeth.
3. A flat or curved **template** used in arranging denture teeth.

Intraoral Structure Terminology

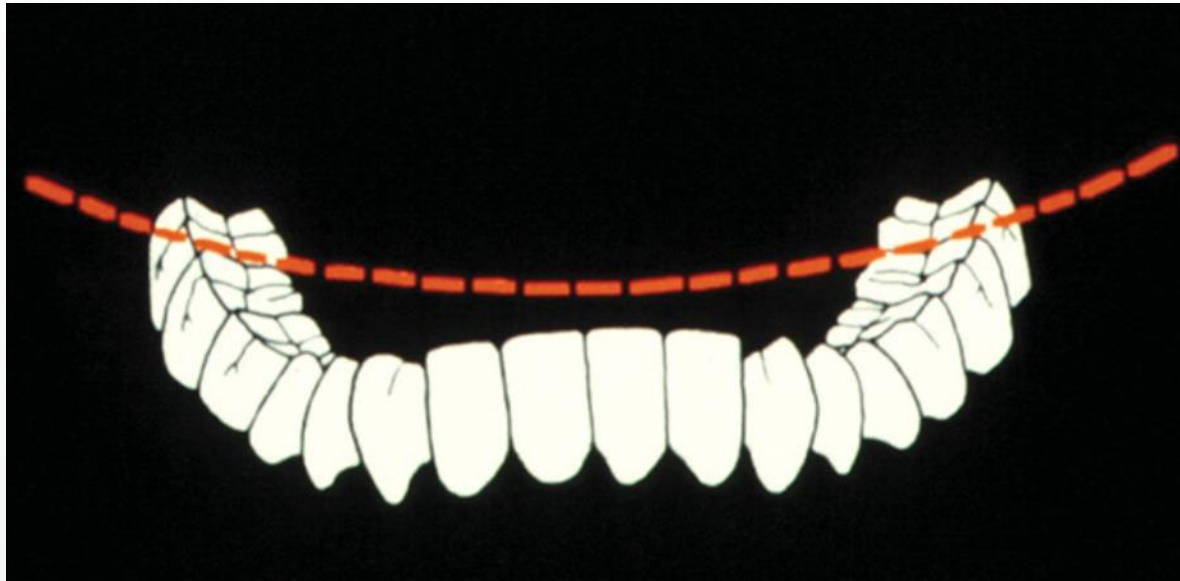
Anteroposterior curve (Curve of Spee)



The anatomic curve established by the occlusal alignment of the teeth, as projected onto the median plane, **beginning with the cusp tip of the mandibular canine and following the buccal cusp tips of the premolar and molar teeth**, continuing through the anterior border of the mandibular ramus, ending with the anterior most portion of the mandibular condyle.

Intraoral Structure Terminology

Occlusal Plane



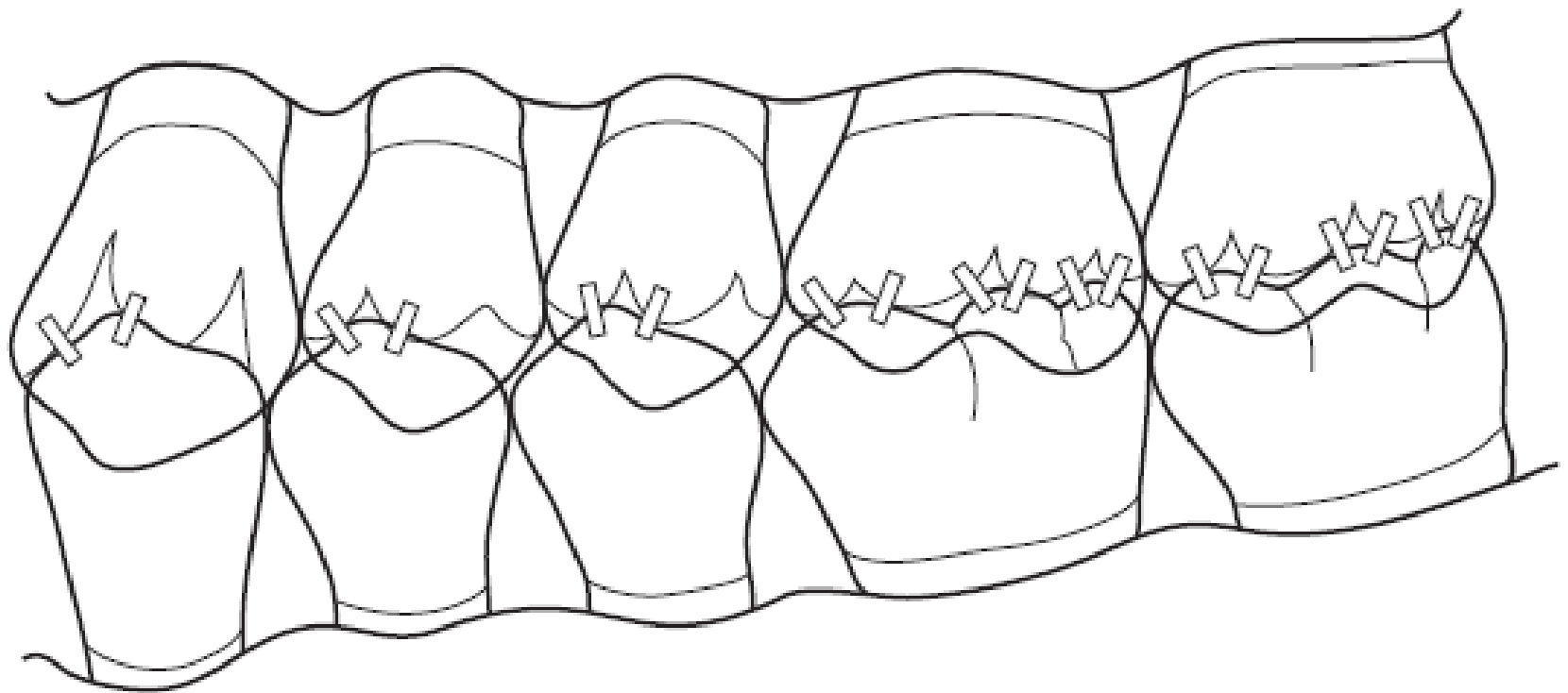
1. In the mandibular arch, that curve (viewed in the frontal plane), which is concave and **contacts the buccal and lingual cusp tips of the mandibular molars**; in the maxillary arch, that curve (viewed in the frontal plane), which is convex and contacts the buccal and lingual cusp tips of the maxillary molars.
2. In the theory that occlusion should be spherical, the curvature of the cusps as projected on the frontal plane expressed in both arches; the curve in the mandibular arch being concave and the one in the maxillary arch being convex.

Jaw Relation Terminology

Terminology in RPD

Maximum intercuspation

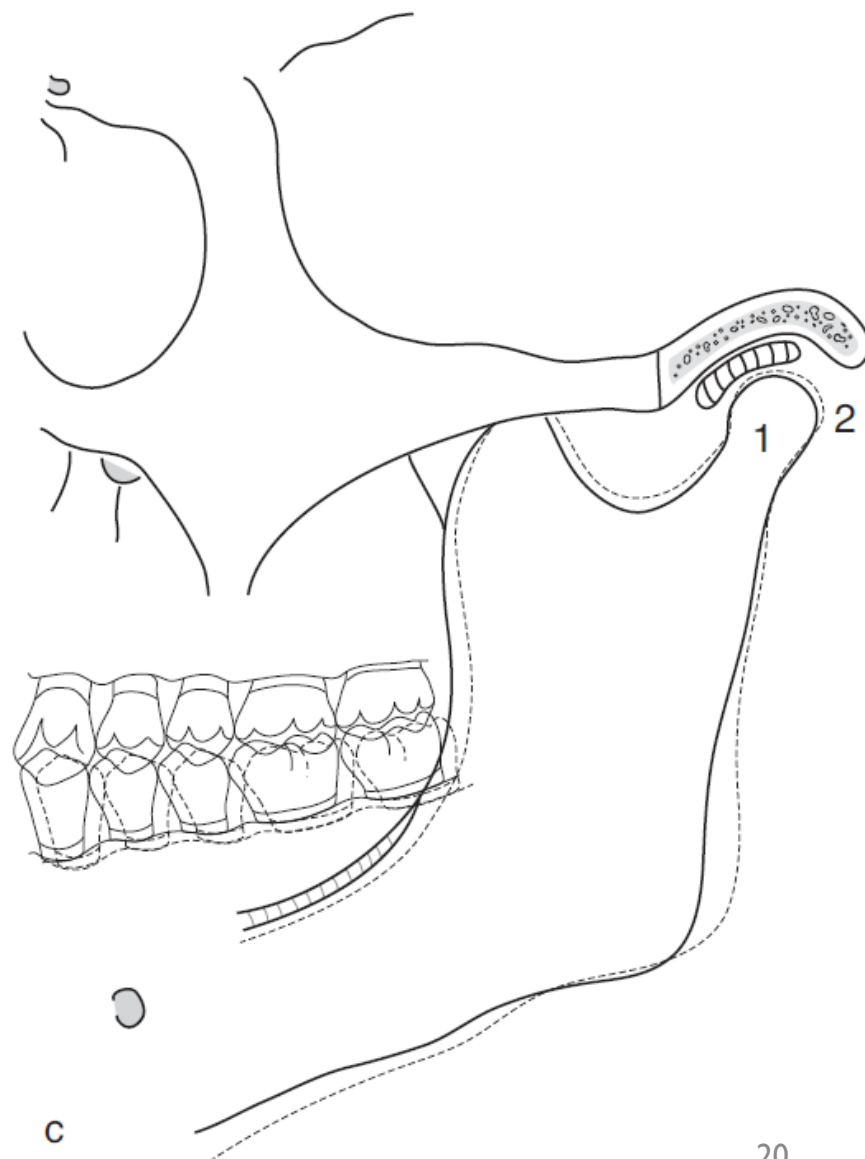
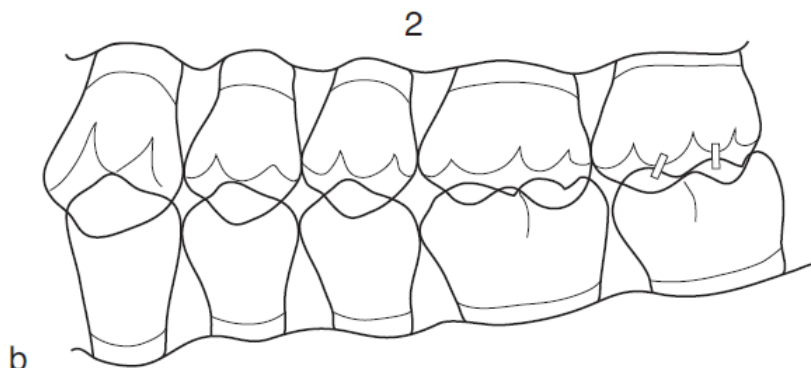
1



a

Terminology in RPD

Centric occlusion



Types of RPD Terminology

การแบ่งชนิดของRPD

- แบ่งตามสิ่งที่ใช้รองรับแรง (Support)
 - Tooth support RPD (Tooth-borne)
 - Tissue support RPD (Tissue-borne)
 - Tooth and tissue support (Tooth and tissue borne)

Types of RPD Terminology



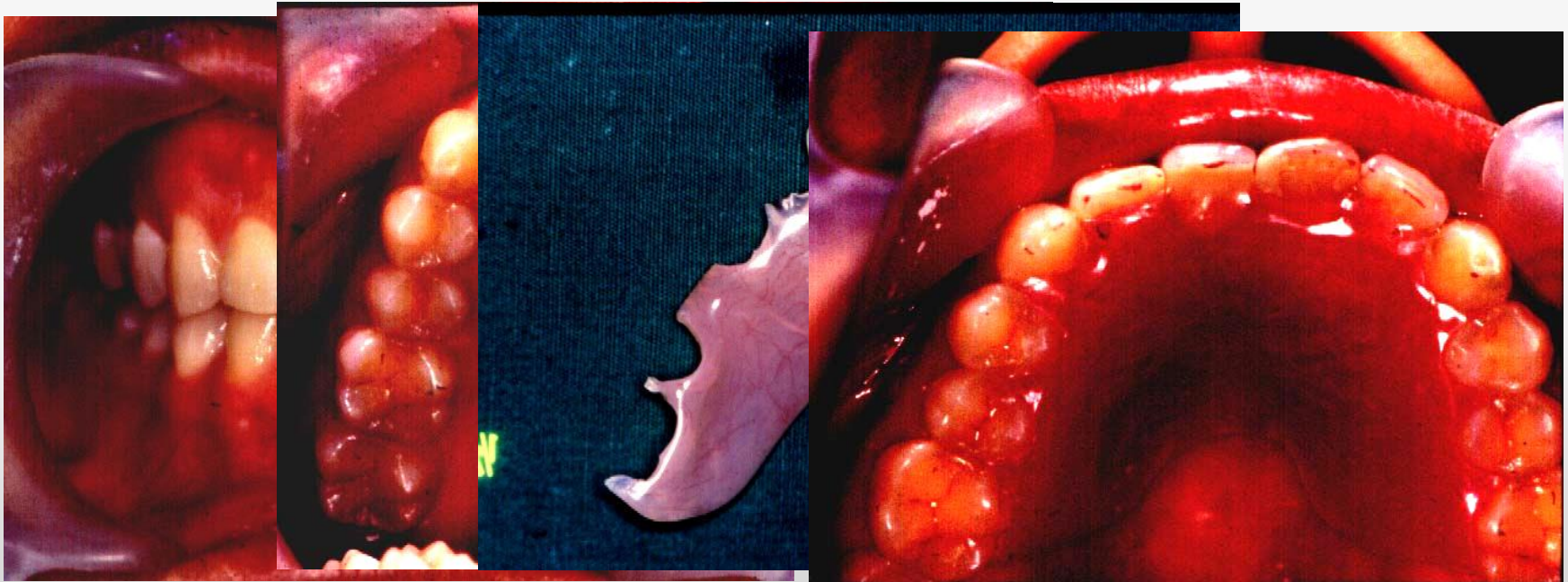
Tooth-supported RPD

A removable dental prosthesis base that restores an edentulous region that has **abutment teeth at each end for support**. The tissue that it covers is not used for primary support.

- แบ่งตามสิ่งที่ใช้รองรับแรง (Support)

- Tissue support RPD (Tissue-borne)

ฟันปลอมบางส่วนถอดได้ที่มีเฉพาะสันเหงือกและเนื้อเยื่อเป็นสิ่งที่รองรับแรงจากการบดเคี้ยว เช่น
Temporary plate



Types of RPD Terminology

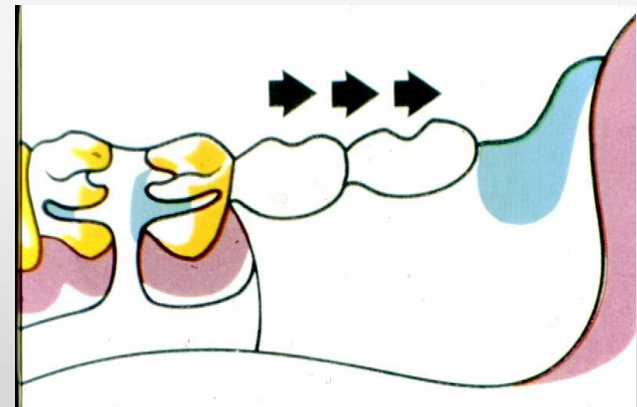
Tooth and tissue support

Extension-base RPD (Bilateral)

A removable partial denture that is supported and retained by **natural teeth anterior to the denture base** and in which a portion of the functional force vector of the base is carried by **the residual ridge**.



Distal extension RPD Free end saddle



Types of RPD Terminology



Extension-base RPD (Unilateral)

A removable partial denture that is supported and retained by **natural teeth anterior to the denture base** and in which a portion of the functional force vector of the base is carried by **the residual ridge**.

การแบ่งชนิดของRPD

- แบ่งตามวัสดุที่ใช้ทำฐานฟันปลอม
 - ชนิดฐานโลหะ (Metal or Skeleton RPD)
 - RPD (Cr-Co), Stainless steel , Gold alloys
 - ชนิดฐานอคริลิก (Acrylic RPD)
 - APD, TP(Temporary plate),
 - TP with wrought wire clasp

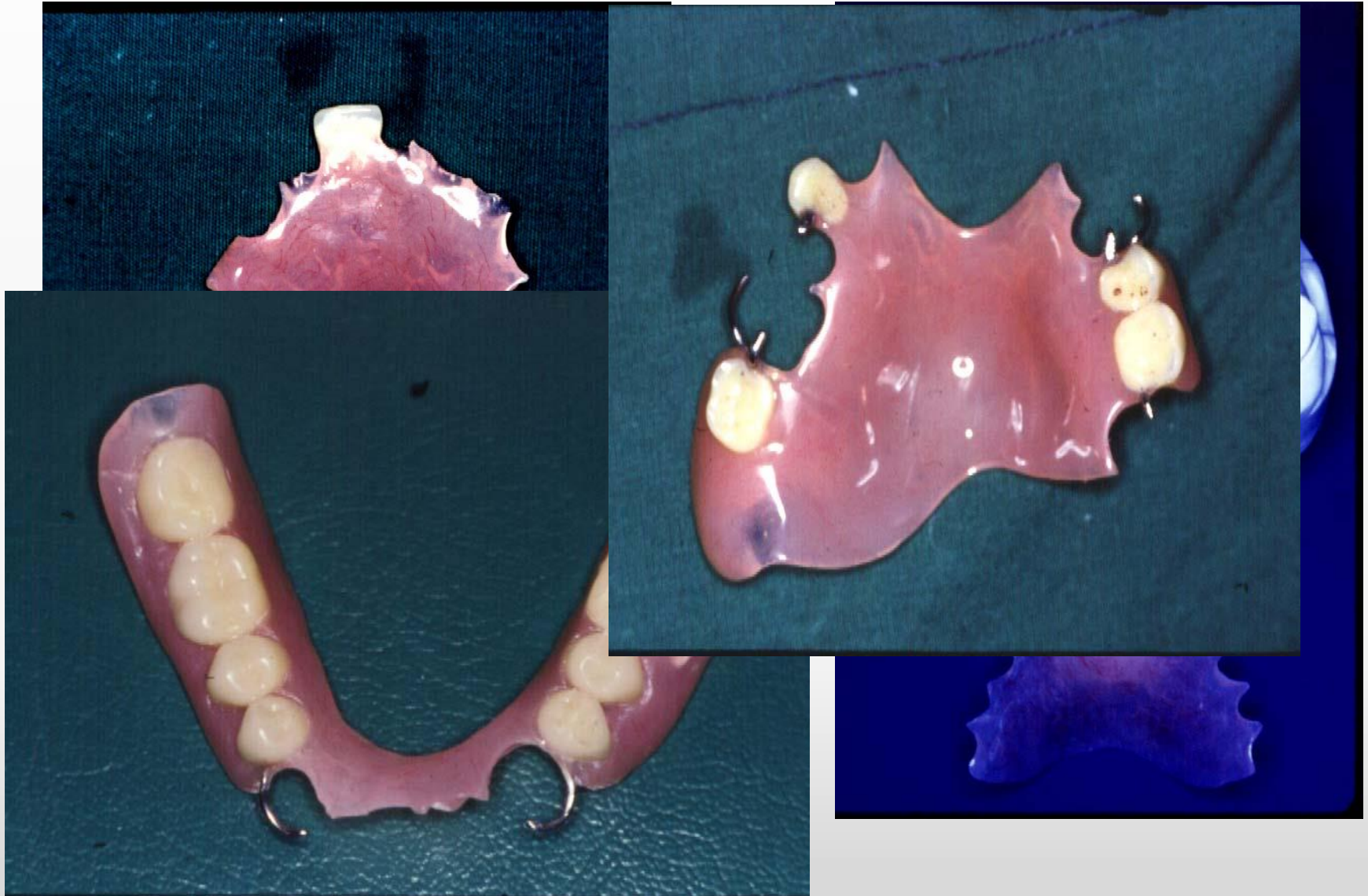
RPDชนิดฐานโลหะ (Metal or Skeleton RPD) RPD (Cr-Co)



RPD ชนิดฐานอคริลิก (Acrylic RPD)

- APD, TP(Temporary plate)
 - ฟันปลอมฐานอคริลิก หรือฟันปลอมชนิดใส่ชั่วคราว
- TP with wrought wire clasp
 - ฟันปลอมชนิดใส่ชั่วคราว มีส่วนช่วยยึดเกาะเป็นตะขอหลอดดัด

RPD ชนิดฐานอคริลิก (Acrylic RPD)



การแบ่งชนิดของRPD

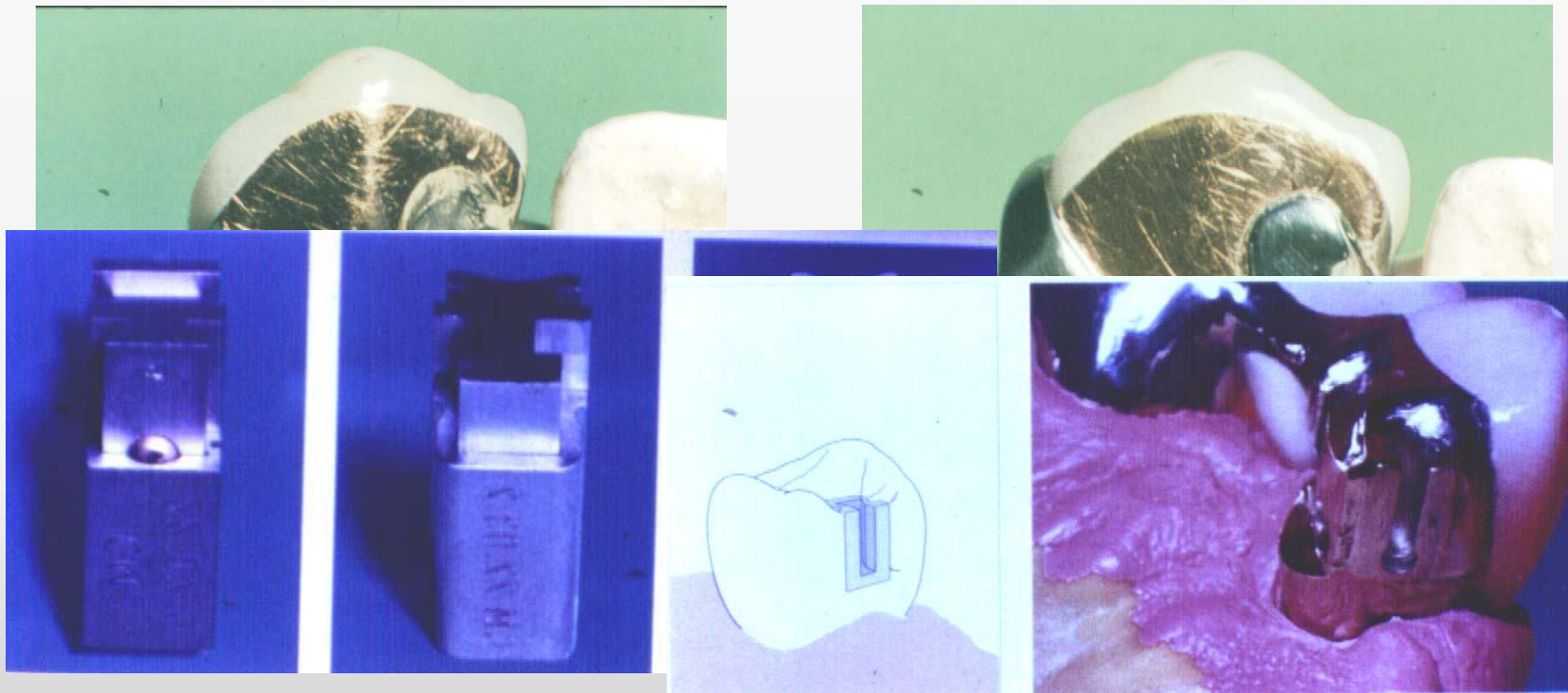
- แบ่งตามการยึดอยู่กับฟันธรรมชาติ
 - Extracoronal RPD ใช้ตะขอเป็นสิ่งที่ยึดอยู่กับผิวฟัน
 - Intracoronal RPD ใช้สลักบนฟันปลอมและร่องยึดในตัวฟัน(Attachment)

- แบ่งตามการยึดอยู่กับฟันธรรมชาติ
 - Extracoronal RPD ใช้ตะขอเป็นสิ่งที่ยึดอยู่กับผิวฟัน



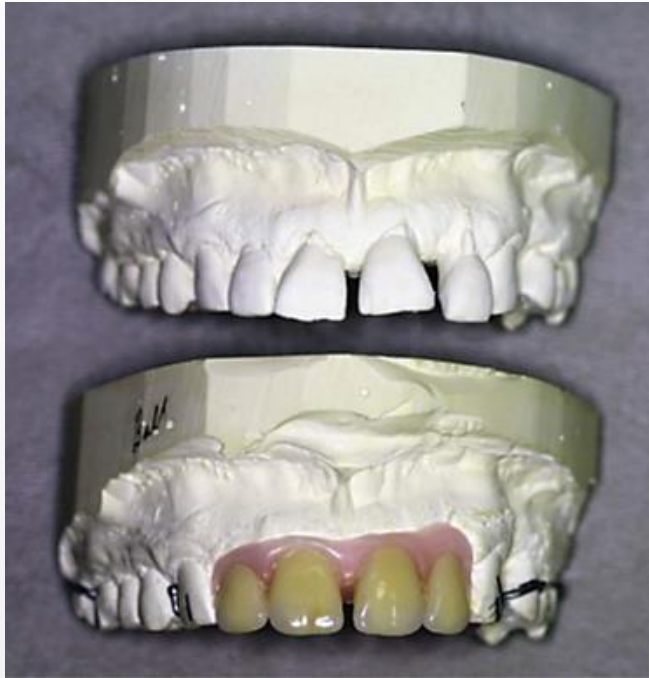
- แบ่งตามการยึดอยู่กับฟันธรรมชาติ

- Intracoronary RPD ใช้สลักบนพื้นปลอมและร่องยึดในตัวฟัน (Attachment)



Types of RPD Terminology

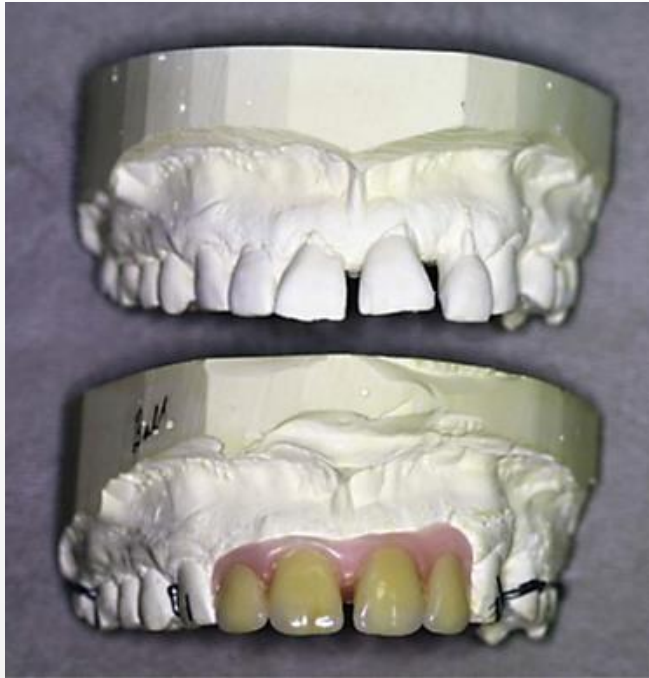
Interim removable partial denture



A removable dental prosthesis, designed to enhance esthetics, stabilization, and/or function for a limited period of time, after which it is to be replaced by a definitive dental prosthesis; often such prostheses are used to assist in determination of the therapeutic effectiveness of a specific treatment plan or the form and function of the planned for definitive prosthesis.

Types of RPD Terminology

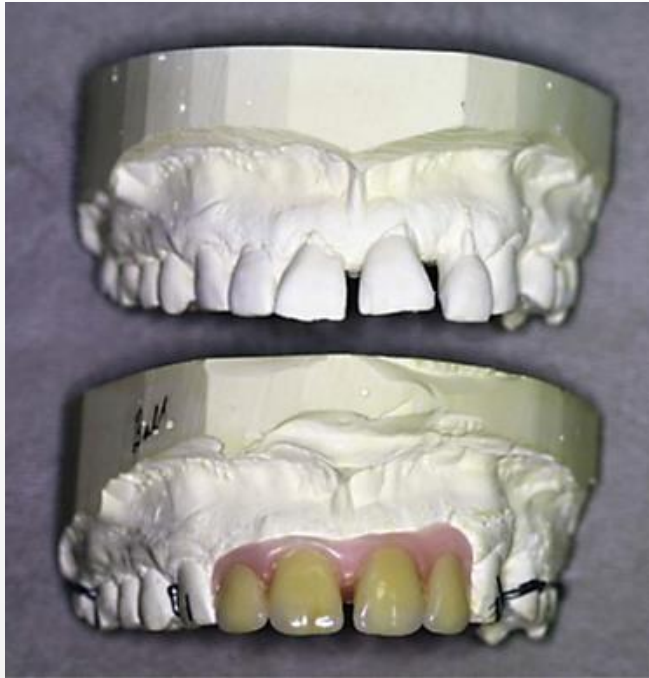
Transitional denture



A removable partial denture **serving as an interim prosthesis** to which **artificial teeth will be added as natural teeth** are lost and that will be replaced after post-extraction tissue changes have occurred; a removable transitional denture may become an interim complete removable prosthesis when all of the natural teeth in the dental arch have been extracted (or used as overdenture abutments).

Types of RPD Terminology

Treatment denture

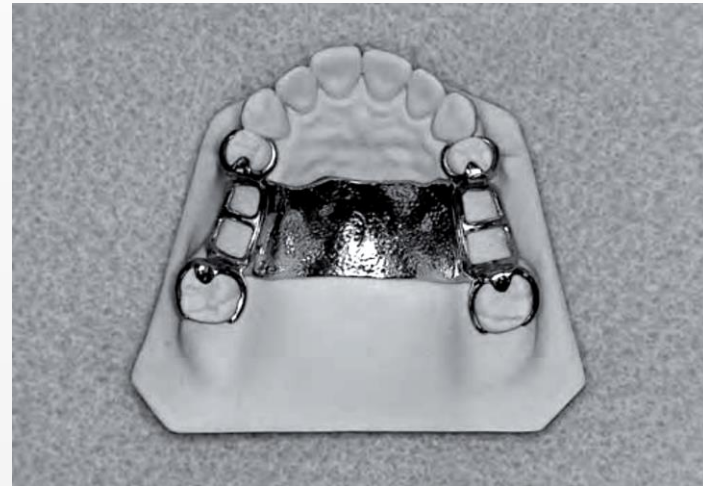
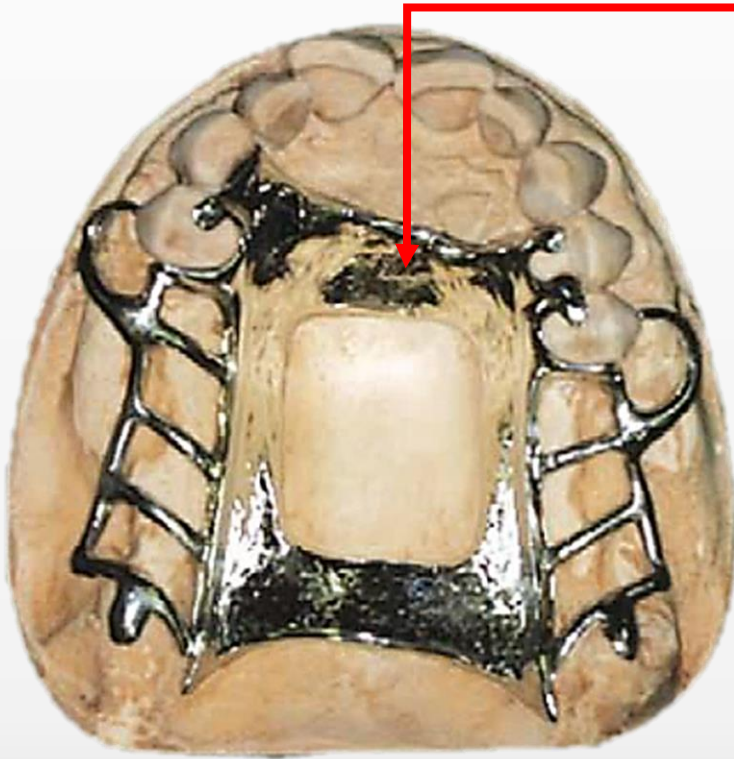


1. A removable denture used for **the purpose of treating or conditioning the tissues** that are called on to support and retain it.
2. A denture that is placed in **preparation for future therapy**.

Component Parts Terminology

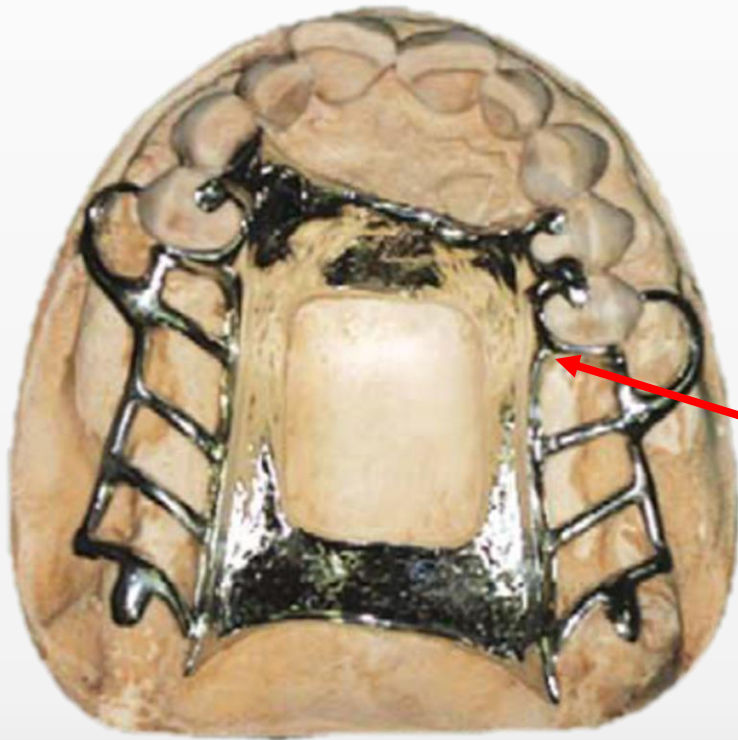
Terminology in Upper RPD

Major connector



The part of a removable partial denture that joins the components on one side of the arch to those on the opposite side.

Terminology in Upper RPD

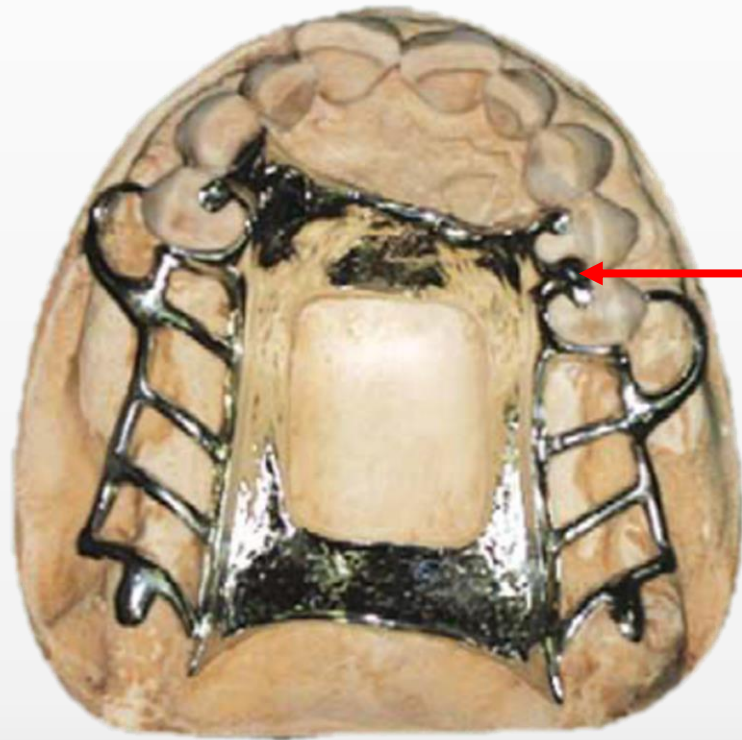


Minor connector

The connecting link between the major connector or base of a removable partial denture and the other units of the prosthesis, such as the clasp assembly, indirect retainers, occlusal rests, or cingulum rests.

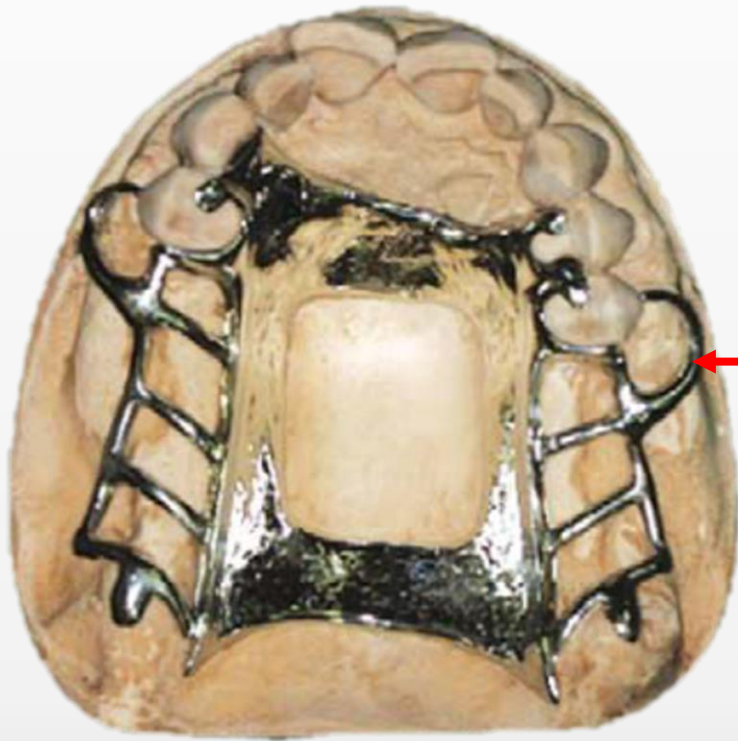
Terminology in Upper RPD

Occlusal rest



A rigid extension of a removable partial denture that contacts the occlusal surface of a tooth or restoration, the occlusal surface of which is commonly prepared to receive this rest.

Terminology in Upper RPD

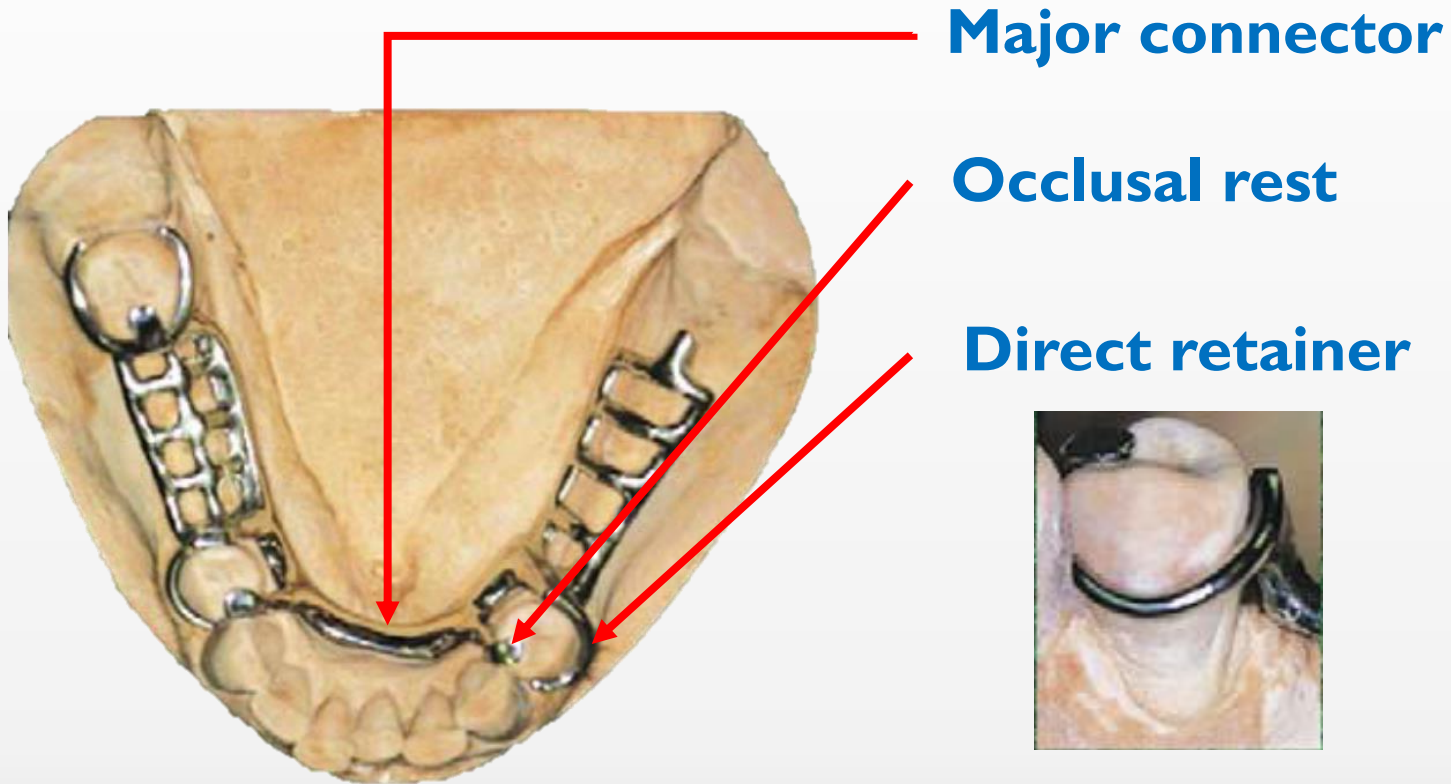


Direct retainer



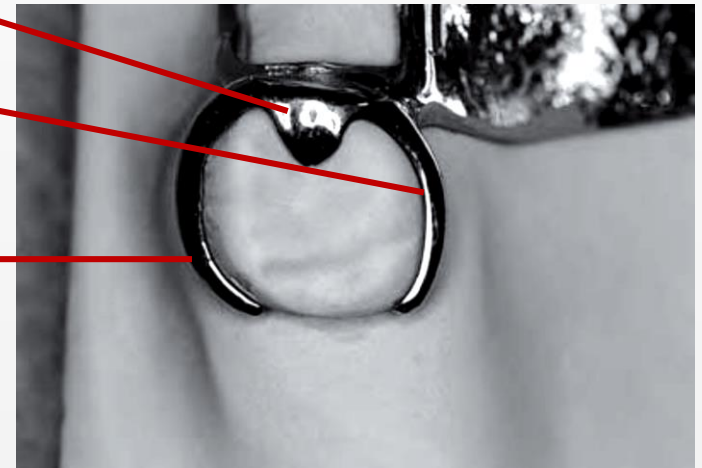
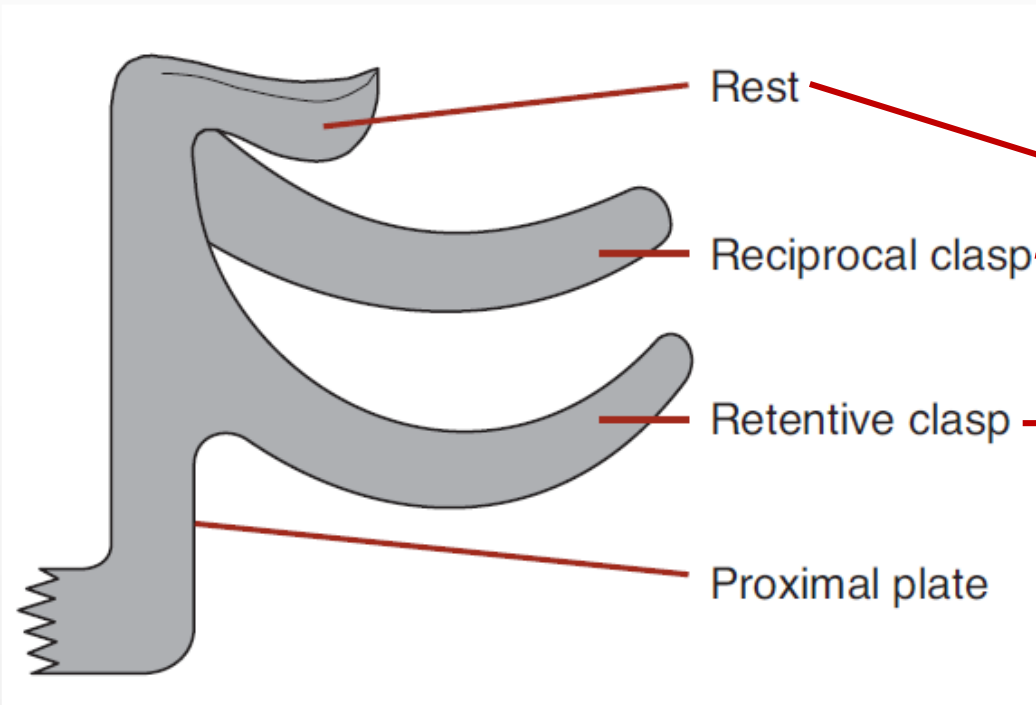
That component of a removable partial denture used **to retain and prevent dislodgment**, consisting of a clasp assembly or precision attachment.

Terminology in RPD

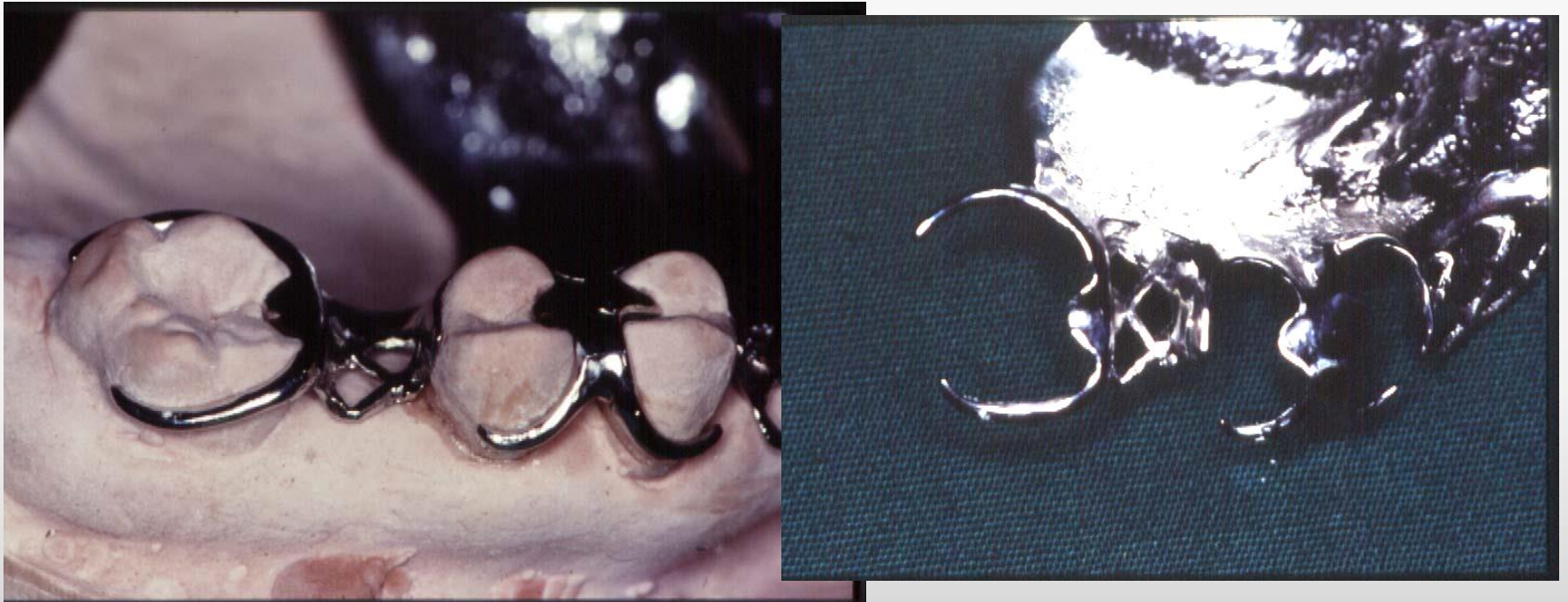


Terminology in RPD

Direct retainer



- **Clasp ตะขอ** คือส่วนที่ฟันปลอม ใช้ในการยึดอยู่กับฟันหลักเพื่อให้ฟันปลอมอยู่ในช่องปาก



- Retention การยึดอยู่ เป็นสิ่งที่ยึดเกาะฟันปลอมให้อยู่ในช่องปาก มักจะได้จากตะขอที่ยึดอยู่ใต้ความคอดที่มีประโยชน์



Terminology in RPD

Suprabulge clasp



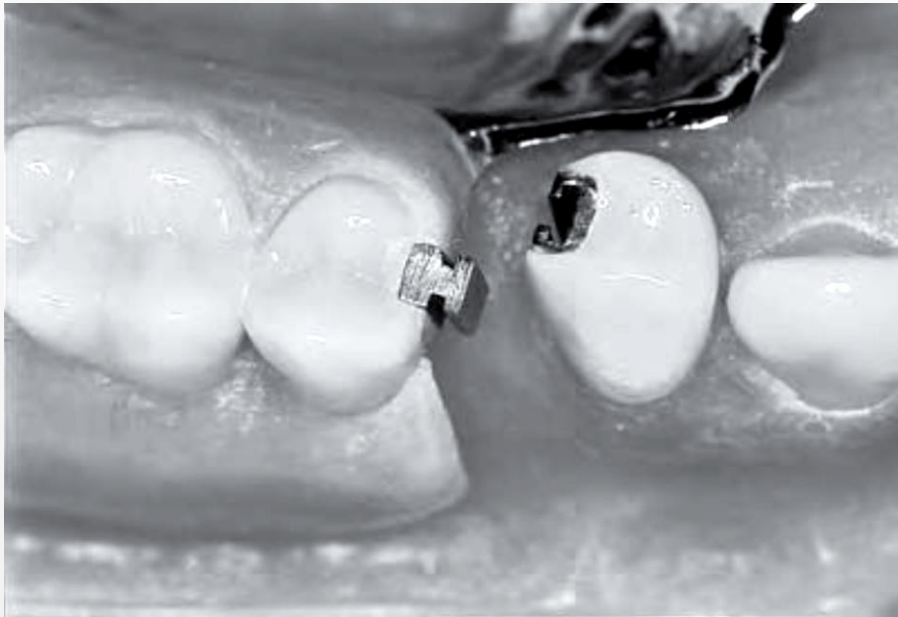
Terminology in RPD

Infrabulge clasp



Terminology in RPD

Intracoronary retainer (Attachment)

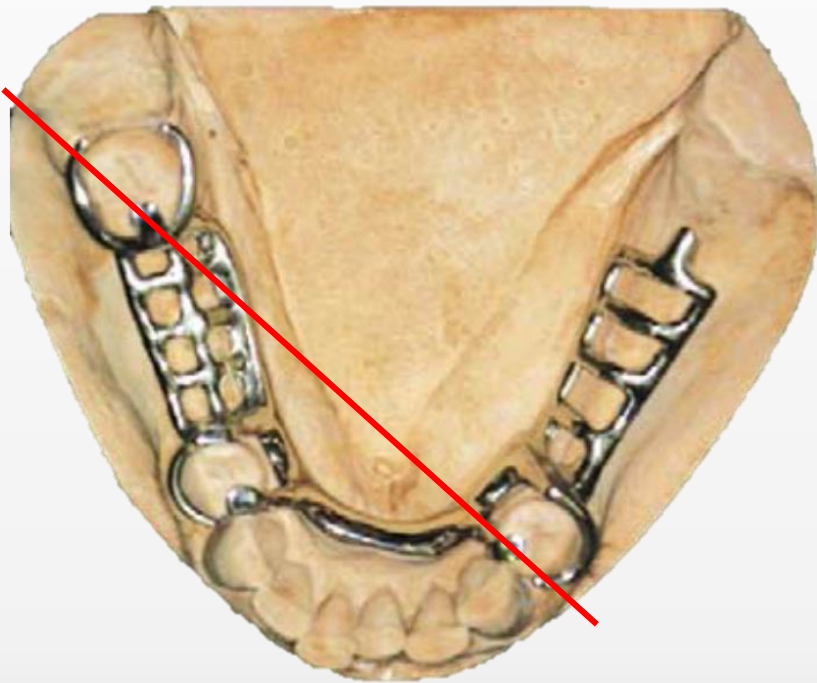


Terminology in RPD

Fulcrum line

1. A theoretical line passing through the point around which a lever functions and at right angles to its path of movement.

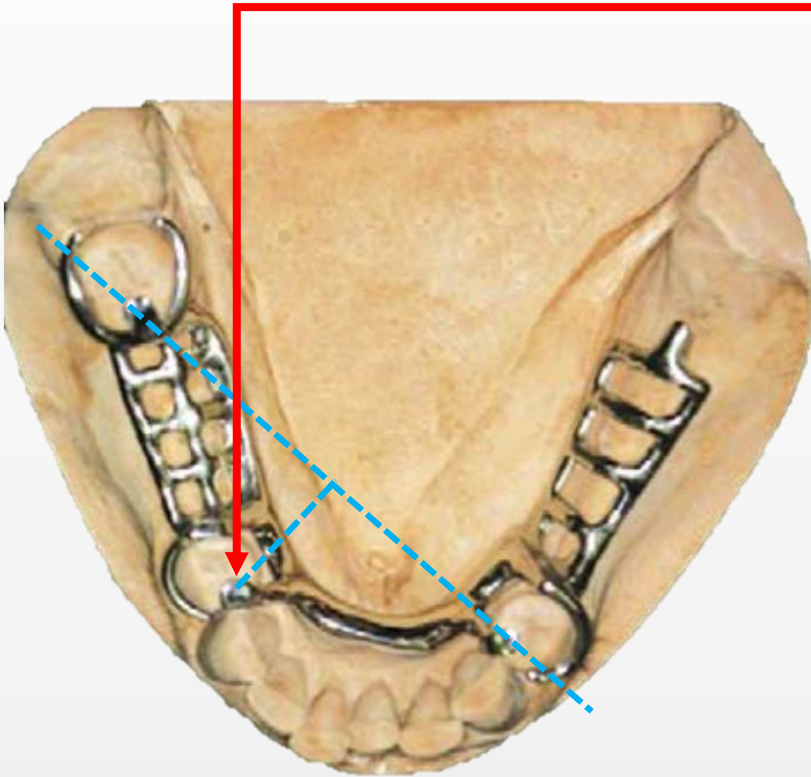
2. An imaginary line, **connecting occlusal rests**, around which a removable partial denture tends to rotate under masticatory forces; the determinants for the fulcrum line are usually the **cross-arch occlusal rests on the most distally located abutments**.



Terminology in RPD

Indirect retainer

The component of a removable partial denture that assists the direct retainer(s) in preventing displacement of the distal-extension denture base by functioning through lever action on the opposite side of the fulcrum line when the denture base attempts to move away from the tissues in pure rotation around the fulcrum line.



Terminology in RPD



Cross-arch stabilization

Resistance against dislodging or rotational forces obtained by using a fixed or removable partial denture design that **uses natural teeth on the opposite side of the dental arch from the edentulous space to assist in stabilization.**



Terminology in RPD

Denture Base

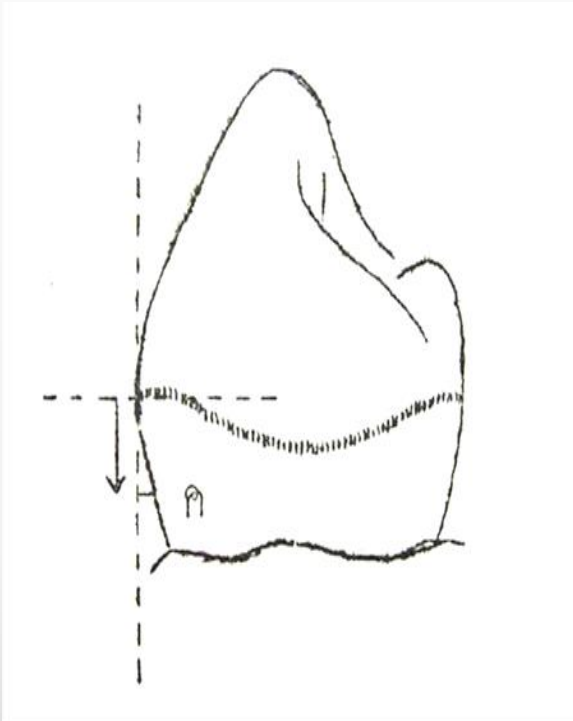


Extension Base



Terminology

- Block-out การปิดความคอดที่ไม่ต้องการ



Terminology

- Block-out การปิดความคอดที่ไม่ต้องการ
 - Parallel block-out ทำให้เกิดความขนานตามแนวทางการถอดใส่
 - Ledge block-out (Shelf block-out) กำหนดแนวการวางตัวของพื้นปลอม
 - Arbitrary block-out ปิดความคอดอื่น ๆ ที่ไม่เกี่ยวข้องเพื่อความสะดวกในการทำงาน

Terminology

- **Block-out** การปิดความคอดที่ไม่ต้องการ



Terminology

- **Relieve, Relief** การป้องกันการกดเนื้อเยื่อ
หรือทำให้เกิดพื้นที่ว่างปลอดการกด



Terminology

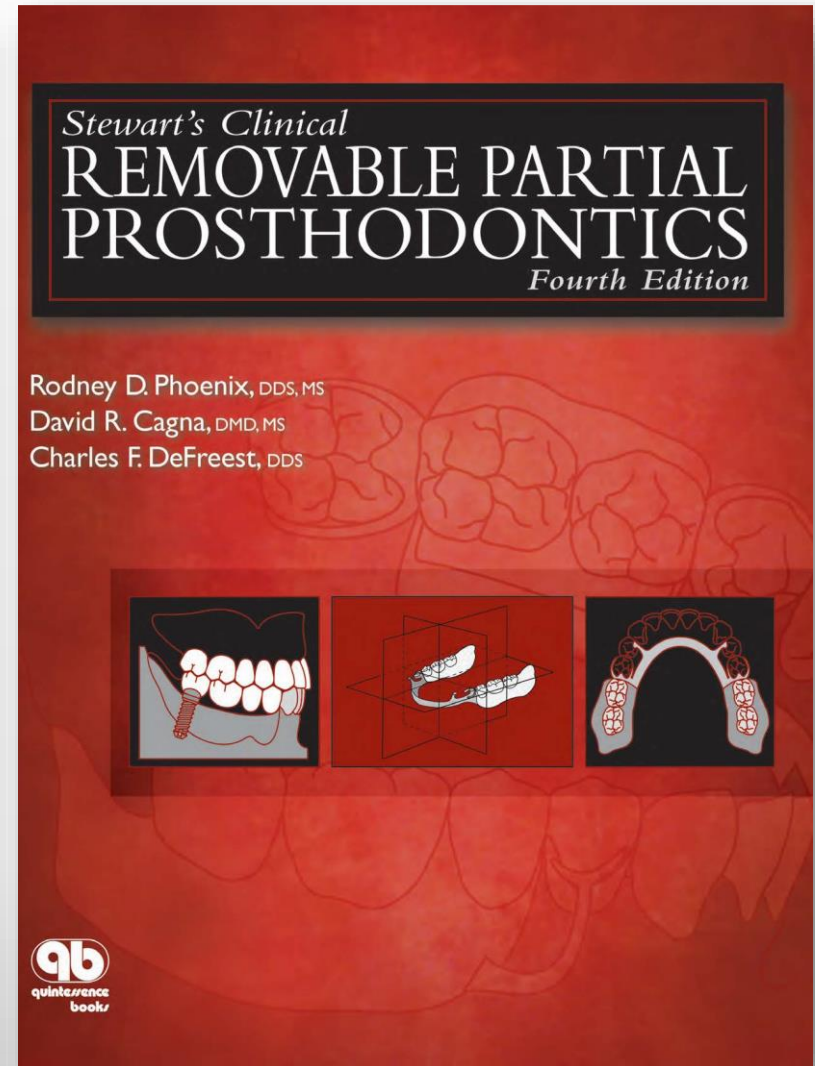
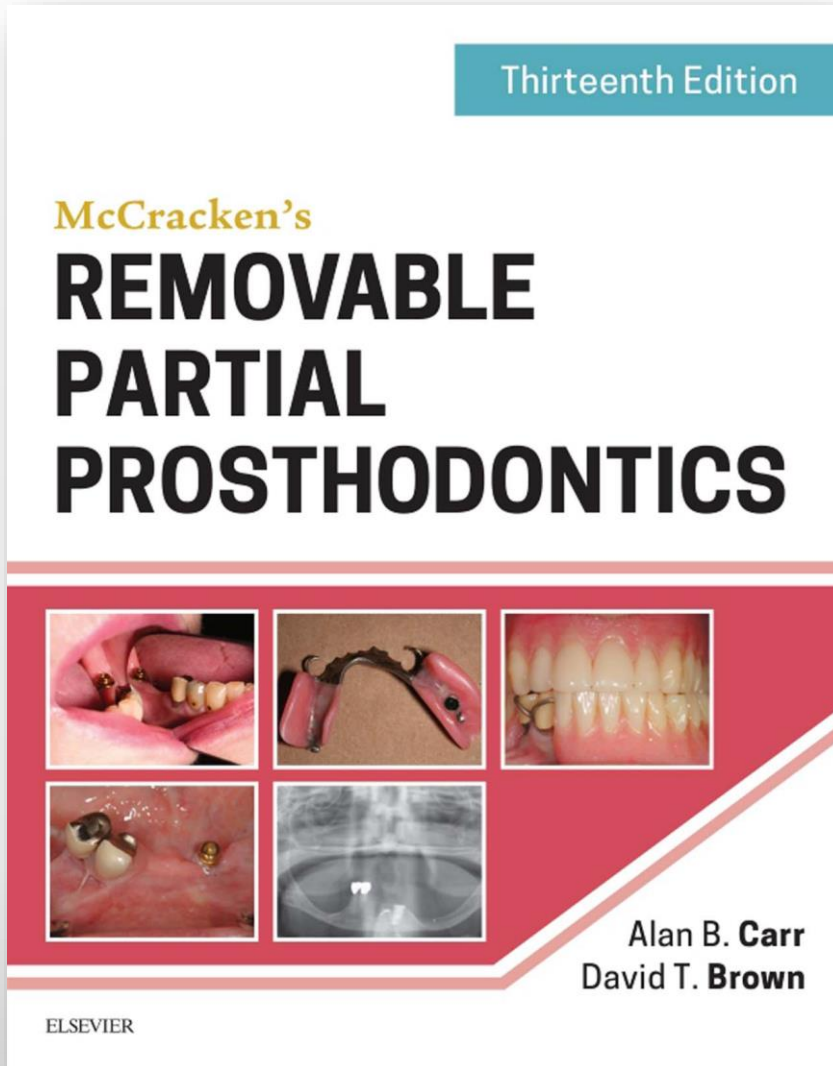
- Cast or Model แบบจำลอง
 - Study cast แบบศึกษา
 - Master cast แบบหลัก
 - Refractory cast, Investment cast แบบทนไฟ

Terminology

- Cast or Model แบบจำลอง



Reference



Thank you for your attention