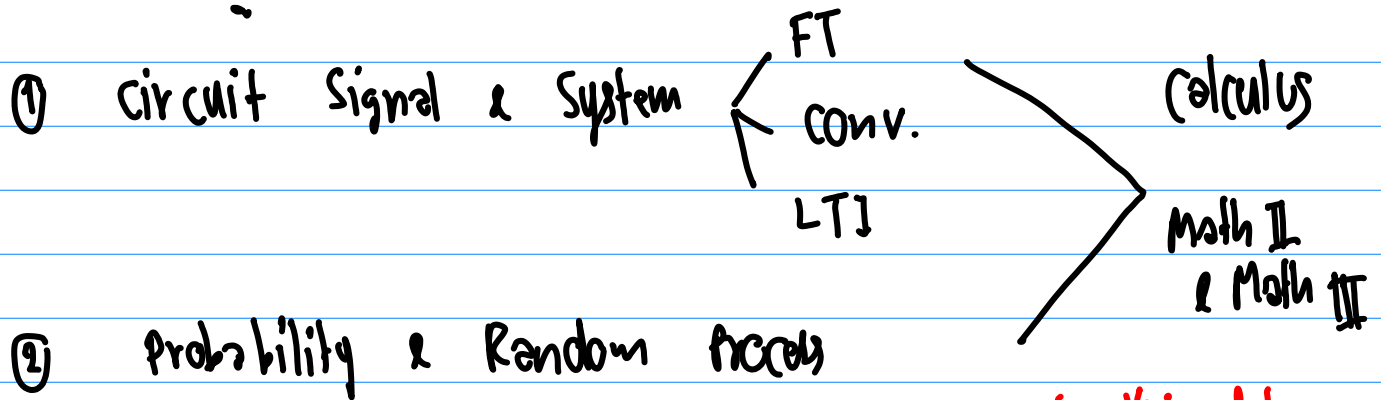


วิชาพื้นฐานก่อน

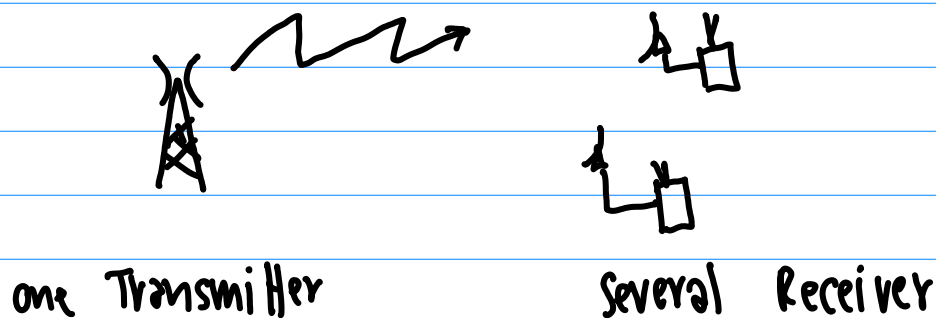


message i.e. Voice, data ...

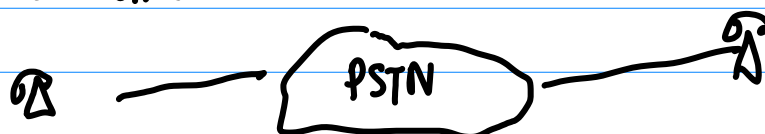
Communication : transmission of information from
one point to another point

modes of Communication :

① Broadcasting :



② Point-to-Point



one transmitter

one Receiver

၇၄ Communication System အားလုံးတွင် Resources

- channel Bandwidth : စာရွက်စာတမ်း
- transmitted power : နိမ့် (မရှိ)

⇒ band limited , power limited

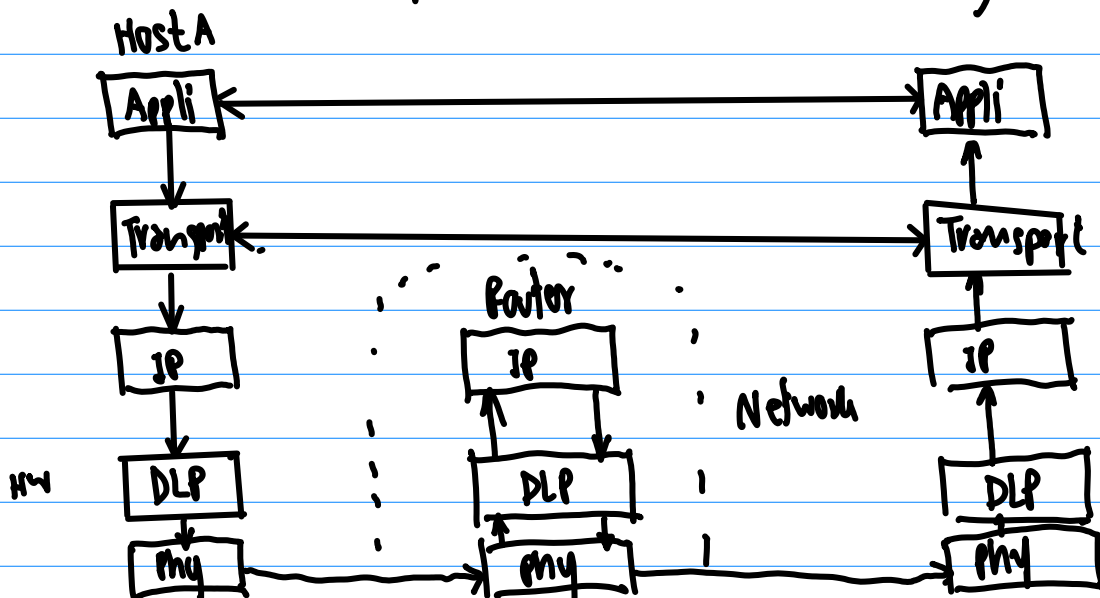
Source of information:

- Speech
- music
- pictures
- TV.

Communication Networks

Software
H/W

အားလုံးတွင် အသုံးပြုသော အခြေခံမူလမူဝါဒမှာ OSI, TCP/IP

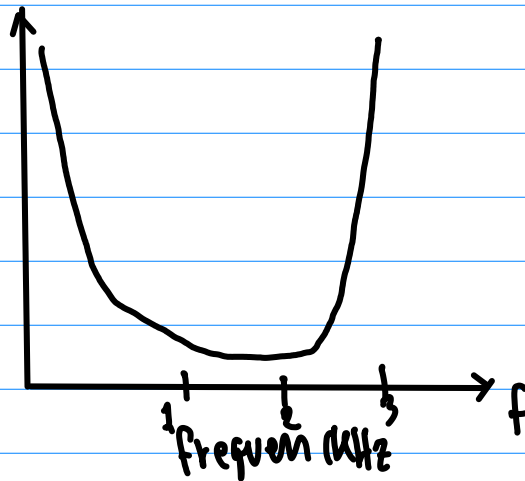


Communication System in the physical layer

Communication channel \leftarrow cable \leftarrow Fiber optic

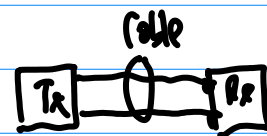
telephone cable

Insertion loss $10 \log_{10} (P_0/P_t)$ dB! $P_0 = \text{Power in } T_x \text{ \& } R_x$
 Transmission



$P_t = \text{Power in } T_x \text{ and}$

in the wire \& R_x



if impedance of load R_x

min

envelope delay (ms)

